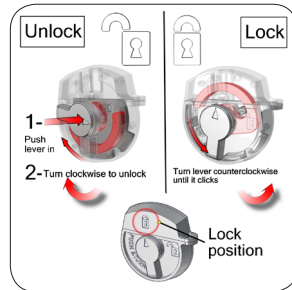


# OCX Exhibit Case

## OCX

It's critical to protect your tradeshow exhibit investment with a quality constructed transit and shipping case. Designed to house specific lines of exhibits and displays for maximum portability and strong, yet lightweight. This black roto-molded case is ideal for exhibits, graphics and accessories.



Push & turn locking mechanism instruction



Under lid foam padding for spot light storage



Recessed wheels & handles

## features and benefits:

- Black roto-molded case
- Ideal for exhibits, graphics & accessories
- Premium latches for maximum strength
- Spot light storage in the lid
- Built-in wheels and molded handle for maximum portability
- Made from recyclable materials
- Made in the USA
- Stretch wrap, roll wrap and fabric wrap available for case to counter conversion (MDF tabletop optional)
- One year limited warranty against manufacturer defects

## dimensions:

### Hardware

Interior:  
23.5" w x 35.75" h x 13" d  
597mm(w) x 908mm(h) x 330mm(d)

Exterior:  
26.75" w x 39.5" h x 17" d  
680mm(w) x 1003mm(h) x 432mm(d)

### Shipping

(can ship FedEx or UPS):  
40" l x 27" h x 18" d  
1016mm(l) x 686mm(h) x 457mm(d)

Weight (when empty):  
32 lbs / 15 kgs

## additional information:

Optional MDF tabletop available in 4 colors for a premium case to counter conversion look.

OCX-CTP



Optional Roll Wrap or Carpet Wrap, see cover page for more details:

OCX-C2C-F  
OCX-C2C-G

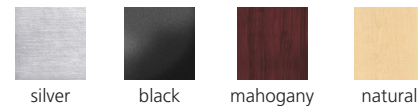


Optional Stretch Wrap, see cover page for more details:

OCX-SW-G



### Tabletop Colors:



We are continually improving and modifying our product range and reserve the right to vary the specifications without prior notice. All dimensions and weights quoted are approximate and we accept no responsibility for variance. E&OE. See Graphic Templates for graphic bleed specifications.

# OCX Exhibit Case to Counter Roll Wrap

OCX-C2C-F  
OCX-C2C-G

It's critical to protect your tradeshow exhibit investment with a quality constructed transit and shipping case. Designed to house specific lines of exhibits and displays for maximum portability and strong, yet lightweight. This black roto-molded case is ideal for exhibits, graphics and accessories.



## features and benefits:

- Your choice of carpet color or Graphic Print
- Case not included
- Converts OCX to a counter
- Quick and easy to apply
- Easy to store and transport
- One year graphic limited warranty

## dimensions:

### Hardware

Interior:  
23.5" w x 35.75" h x 13" d  
597mm(w) x 908mm(h) x 330mm(d)

Exterior:  
26.75" w x 39.5" h x 17" d  
680mm(w) x 1003mm(h) x 432mm(d)

### Shipping

(can ship FedEx or UPS):  
40" l x 27" h x 18" d  
1016mm(l) x 686mm(h) x 457mm(d)

Weight (when empty):  
34 lbs / 16 kgs

### Graphics

Refer to related graphic template for more information.

Visit:  
[www.exhibitors-handbook.com/graphic-templates](http://www.exhibitors-handbook.com/graphic-templates)

## additional information:

Graphic material:  
22mil Opaque PVC, POF 1 or Carpet

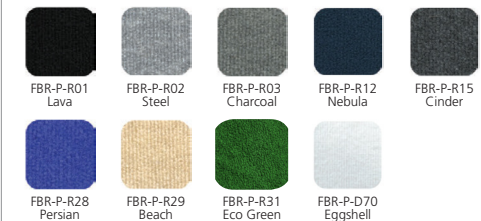
Fabric made from recycled materials

Fabric and Graphic are same size

Regal - smooth exhibit & display fabric



Premier - ribbed exhibit & display fabric



We are continually improving and modifying our product range and reserve the right to vary the specifications without prior notice. All dimensions and weights quoted are approximate and we accept no responsibility for variance. E&OE. See Graphic Templates for graphic bleed specifications.

# OCX Exhibit Case to Counter Stretch Wrap

## OCX-SW-G

It's critical to protect your tradeshow exhibit investment with a quality constructed transit and shipping case. Designed to house specific lines of exhibits and displays for maximum portability and strong, yet lightweight. This black roto-molded case is ideal for exhibits, graphics and accessories.



## features and benefits:

- Stretch fabric only, case not included
- Converts OCX to a counter
- Quick and easy to apply
- Easy to store and transport
- Can be washed and dry cleaned
- One year graphic limited warranty

## dimensions:

| Hardware   | Graphics  |
|--|---|
| <p>Interior:<br/>23.5" w x 35.75" h x 13" d<br/>597mm(w) x 908mm(h) x 330mm(d)</p> <p>Exterior:<br/>26.75" w x 39.5" h x 17" d<br/>680mm(w) x 1003mm(h) x 432mm(d)</p> | <p>Refer to related graphic template for more information.</p> <p>Visit:<br/><a href="http://www.exhibitors-handbook.com/graphic-templates">www.exhibitors-handbook.com/graphic-templates</a></p> |

## Shipping

(can ship FedEx or UPS):  
40" l x 27" h x 18" d  
1016mm(l) x 686mm(h) x 457mm(d)

Weight (when empty):  
34 lbs / 16 kgs

## additional information:

Graphic material:  
Power Stretch

Fabric made from recycled materials

We are continually improving and modifying our product range and reserve the right to vary the specifications without prior notice. All dimensions and weights quoted are approximate and we accept no responsibility for variance. E&OE. See Graphic Templates for graphic bleed specifications.

# Kit Assembly OCX Roll Wrap

## Step by Step

### Step 1.

Put one end of the OCX wrap on the indent of the case and begin pulling the wrap around the case.



### Step 2.

Fully pull the wrap around the OCX and attach the two ends of the wrap together by using the Velcro on the ends.



### Step 3.

Make sure the velcro is aligned and that the wrap is tight.



# Kit Assembly OCX Stretch Wrap

## Step by Step

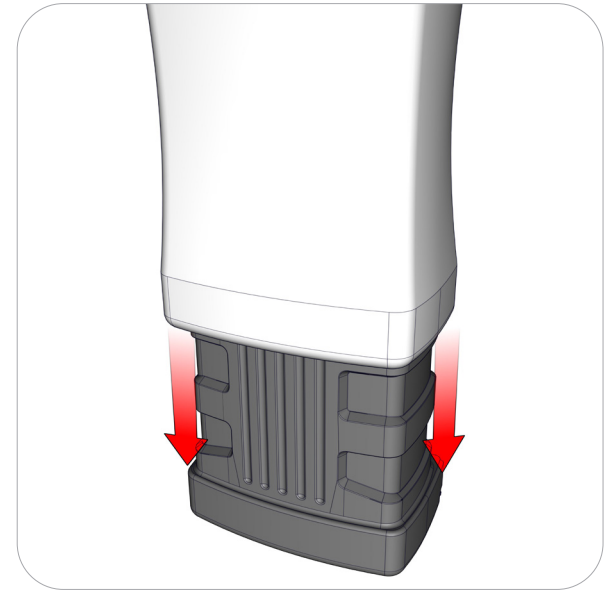
### Step 1.

Align the wrap with the case and begin pulling down the wrap over the OCX.



### Step 2.

Continue pulling the wrap over the OCX, making sure all four sides are parallel to the ground.



### Step 3.

Pull the wrap all the way over the OCX to make the wrap fit tightly and then pull the wrap underneath the case.

