

**Congratulations on the purchase of your Battery Operated Endless Ad™.**

## Owner's Manual

Includes:

- Parts List
- Assembly Instructions
- Disassembly Instructions
- Storage Instructions
- Care Instructions
- Warranty Information

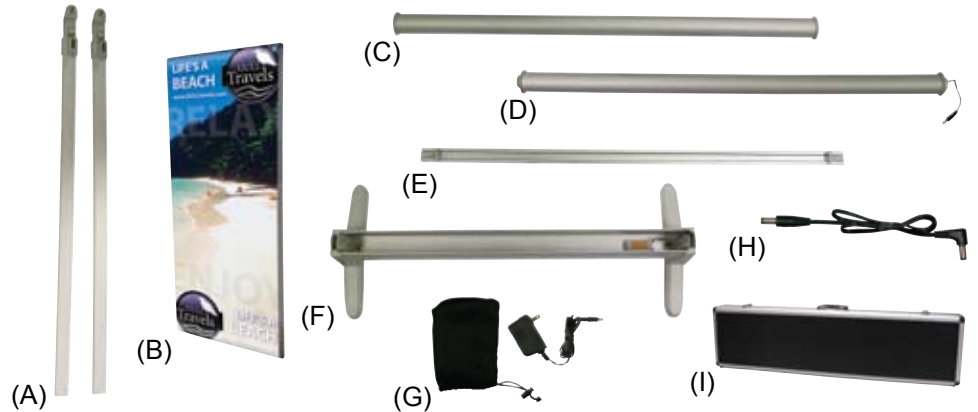
Please read all of the information carefully and contact your distributor or supplier with any issues.



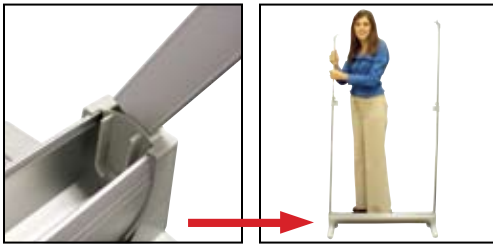
## Parts List

**Important:** Before you begin please count and inspect all pieces.

- 2 - Adjustable Vertical Poles (A)
- 1 - Graphic Banner (B)
- 1 - Top Roller (C)
- 1 - Bottom Roller (D)
- 1 - Center Support Bar (E)
- 1 - Hardware Base (F)
- 1 - Electrical Power Wall Plug/Charger (G)
- 1 - Battery Cord (H)
- 1 - Hard Carry Case(I)



## Assembly Instructions



### Step 1

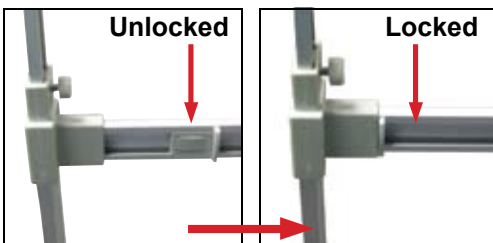
Remove all parts from case. Set base (F) on floor and fan out legs. Insert poles (A) into slots on base (F). Be sure that brackets point inwards as shown.



### Step 2

Unroll approximately 1-2 feet of the banner (B). Insert top roller (C) through the banner (B). Be sure that banner (B) is right side up and hang top roller (C) between pegs as shown.

Insert center support bar (E) through banner (B) and slide into support guides.



### Step 3

Slide the locking inserts to the outside of support bar (E).

## Assembly Instructions (cont.)



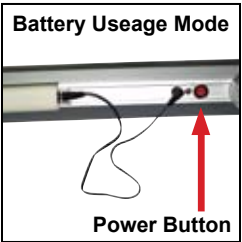
### Step 4

Lift up on bottom roller (D) to remove it from hardware base (F). BE CAREFUL! Bottom roller is plugged into hardware base. Roller can be unplugged for easier installation of banner. Slide bottom roller (D) through the banner (B). Release roller (D) back into hardware base (F).



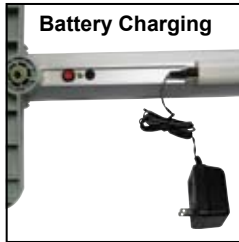
### Step 5

Adjust the tension of your banner (B) by unscrewing the knobs on the central support bar (E). Be sure that each side is of even tension.

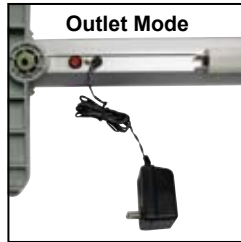


Battery Usage Mode

Power Button



Battery Charging

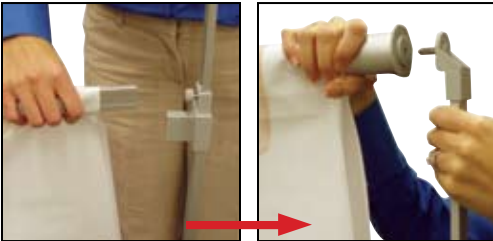


Outlet Mode

### Step 6

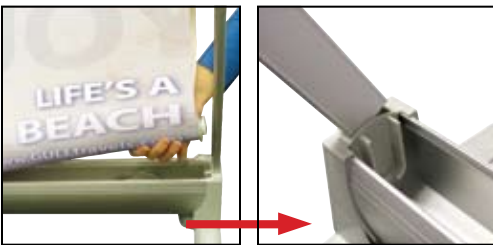
The Battery Endless Ad™ is not charged before shipment. To Charge: Plug in the charging adapter (G) to wall. Insert end of charging adapter (G) to underside of display base (F). Charge overnight for best results. After charging display will rotate for 72 hours. The display can also run while plugged in with the power cord (H).

## Disassembly Instructions



### Step 1

Remove from power source (if applicable).  
Unlock central support bar (E) and take down top roller (C).



### Step 2

Lift out bottom roller (D) and remove banner (B).  
Roll banner (B) to prevent wrinkling.  
Remove poles (A) from slots on base. Fold feet under hardware base (F) and place product back in hard carry case (I).

## Storage Instructions



Store hardware in hard carry case (I) in a cool dry place.  
Roll banner material (B) around cardboard tube and store in a sealed cardboard tube out of direct sunlight and in a cool dry place.

## Care Instructions

Hard carry case, hardware base and canvas banner material can be wiped down with a lint-free damp cloth.

## Warranty Information

All products are designed to provide the user with a cost-effective and durable product. Standard warranty is a 'one year parts and labor' warranty which warrants product against defects in material and workmanship. It does not cover damage due to accidents, abuse, or normal wear and tear. Products found to be defective will be replaced or repaired at factory's discretion.